

Bitzer 6G.2 cool/freeze unit

Specifications

Marca	Bitzer
Tipo	6G.2 cool/freeze unit
Refrigerante	Freon
kW at +10°C/+40°C	146.1
kW at 0°C/+40°C	101.9
kW at -10°C/+40°C	68.6
kW at -20°C/+40°C	43.9
kW at -30°C/+40°C	26.0
kW at -40°C/+40°C	13.4
Electromotor Specs	22
Presostatos	✓
Manómetros de Presion	✓
Separador de aceite	✓
Comentarios	electromotor 22 kW at 1460 RPM // Fan 0.1kW at 1360 RPM
Comentarios	R404a - R22 or other freon types
Stock	1



Description

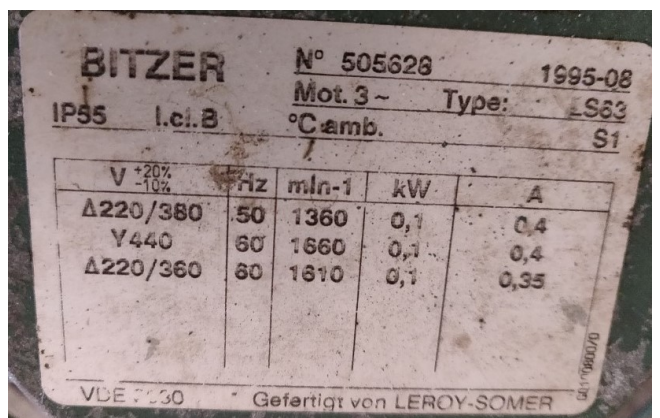
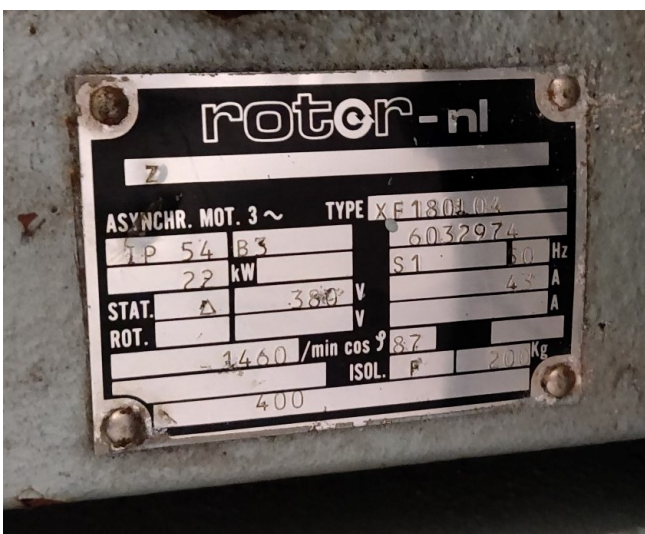
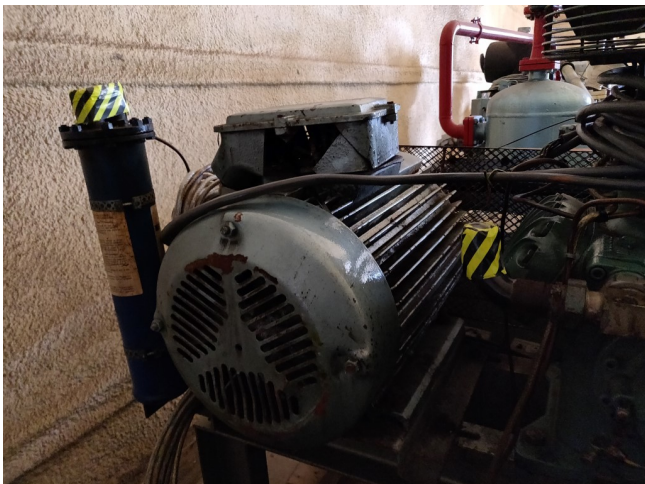
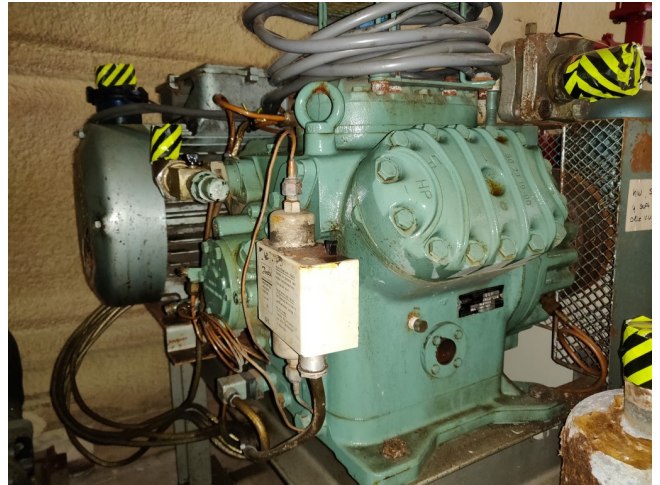
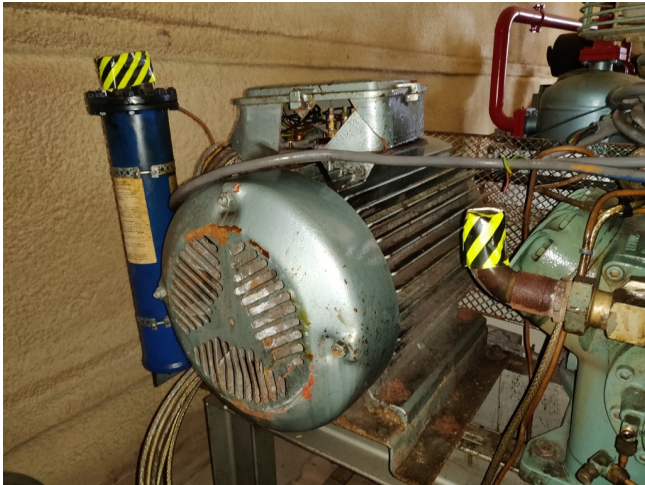
Used Bitzer 6G.2 cool/freeze unit

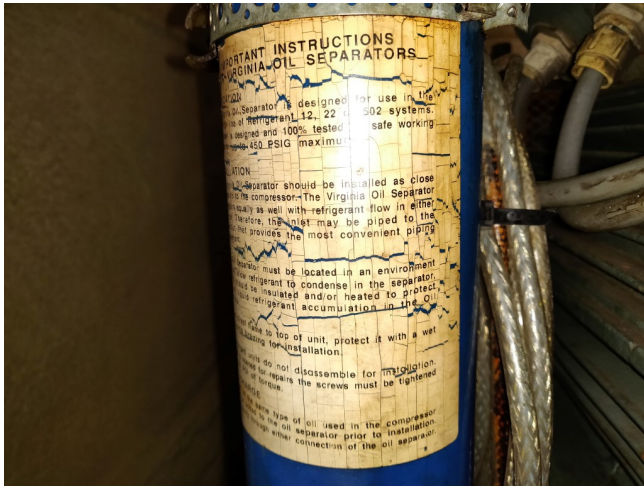
Used cool/freeze unit with a Bitzer 6G.2 Semi-hermetic Reciprocating Compressor and electromotor from Rotor with 22k at 1460 RPM. Our capacity table is based on the used type of Freon. You can also use these compressors on alternative types of Freon. For all the other specs (if available), see the picture of the manufacturer model plate or the attached pdf file. *Why choose for HOSBV? Were not only the largest used refrigeration specialist in Europe, but also, we deliver all equipment including an extensive test, warranty and industrial cleaning. *Optional we can



also perform a new paint job and arrange the logistics.







Reference temperature		Dew point temp.		Drive		Coupling (1:1)			
Liq. subc. (in condenser)		0 K		Capacity control		100%			
Suction gas temperature		20,00 °C							
Result									
Q [W]	Cooling capacity			COP [-]		COPI/EER			
Q* [W]	Cooling capacity *			COP* [-]		COPI/EER *			
P [kW]	Power input			m [kg/h]		Mass flow			
Qc [W]	Condenser Capacity (w. HX)			n [min]		Compr. speed			
tc	to	10°C	0°C	-10°C	-20°C	-30°C	-40°C	-50°C	-60°C
30°C	Q [W]	161153	112870	76475	48457	29856	16058	--	--
	Q* [W]	161153	112870	76475	48457	29856	16058	--	--
	P [kW]	22,8	21,3	19,14	16,34	12,99	9,16	--	--
	Qc [W]	182851	133132	94657	64977	42194	24762	--	--
	COP [-]	7,06	5,29	4,00	3,03	2,30	1,75	--	--
	COP* [-]	7,06	5,29	4,00	3,03	2,30	1,75	--	--
m [kg/h]	3221	2215	1481	949	569	305	--	--	
n [min]	1450	1450	1450	1450	1450	1450	--	--	
40°C	Q [W]	146150	101984	66657	43934	26040	13497	--	--
	Q* [W]	146150	101984	66657	43934	26040	13497	--	--
	P [kW]	27,0	25,1	22,3	18,65	14,39	9,73	--	--
	Qc [W]	171772	125867	89841	61651	39712	22738	--	--
	COP [-]	5,42	4,06	3,08	2,36	1,81	1,39	--	--
	COP* [-]	5,42	4,06	3,08	2,36	1,81	1,39	--	--
m [kg/h]	3148	2154	1430	906	533	275	--	--	
n [min]	1450	1450	1450	1450	1450	1450	--	--	
50°C	Q [W]	131883	91612	61199	38674	22438	11138	--	--
	Q* [W]	131883	91612	61199	38674	22438	11138	--	--
	P [kW]	31,1	28,0	25,2	21,2	16,80	12,19	--	--
	Qc [W]	161429	116746	85131	58815	33393	22715	--	--
	COP [-]	4,24	3,21	2,43	1,82	1,34	0,91	--	--
	COP* [-]	4,24	3,21	2,43	1,82	1,34	0,91	--	--
m [kg/h]	3091	2102	1383	864	497	246	--	--	
n [min]	1450	1450	1450	1450	1450	1450	--	--	

-- No calculation possible (see message in single point selection)
 *According to EN12900 (20°C suction gas temp., 0K liquid subcooling)